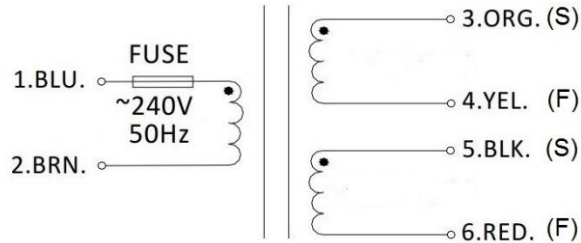


### Transformer Wiring Diagram

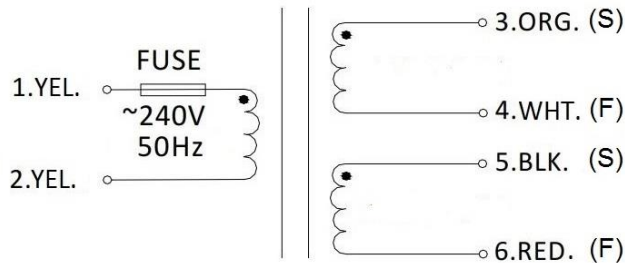
Due to the variety of Toroidal Transformers that we offer at Tortech, the wiring colours can differ between our transformers. From this, we have detailed the circuit diagrams for our Transformers below. Please inspect the colours of the wires from your transformer and match it to the correct transformer wiring diagram. Also please note that each transformer winding has a start (S) and finish (F) as labelled in the diagrams. If unsure please call 0296426003

**Note: The Fuse shown in the Diagrams is Internal to the Transformer and may not always not present.**

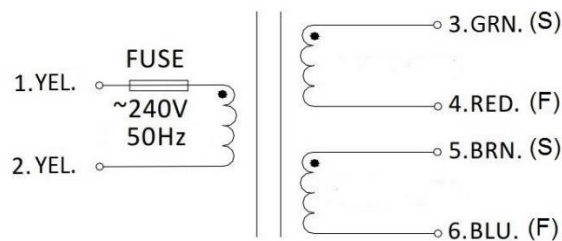
A external Fuse added inline by the User is also recommended, Size guide is Transformer VA divided by 240, then add 30% for nearest Fuse rating. Eg for 300VA transformer ,  $300/240 \times 1.3$  is 1.62 so use a 1.5 to 2A Fuse, (Always Slow Blow type on input). For best protection an output Fuse can be used also, at the Output current rating plus up to 50% Max.



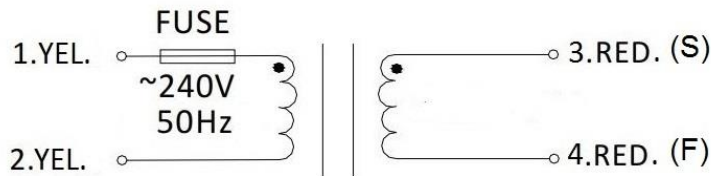
**Circuit Diagram #1**



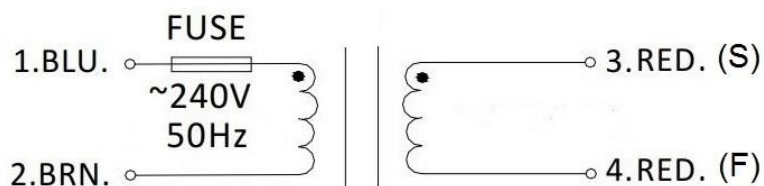
**Circuit Diagram #2**



**Circuit Diagram #3**



**Circuit Diagram #4**



**Circuit Diagram #5**