

TORTECH TRANSFORMERS
 UNIT 4/31 WENTWORTH STREET
 GREENACRE NSW 2190
 PH: (02) 9642 6003 FAX:(02) 9642 6127

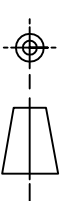
PROJECT DETAILS:

315kVA ISOLATION TRANSFORMER IP23

DRAWING TITLE:
 GENERAL ARRANGEMENT

This drawing is copyright and the property of Tortech and must not be used without written authorisation.

3rd ANGLE PROJECTION



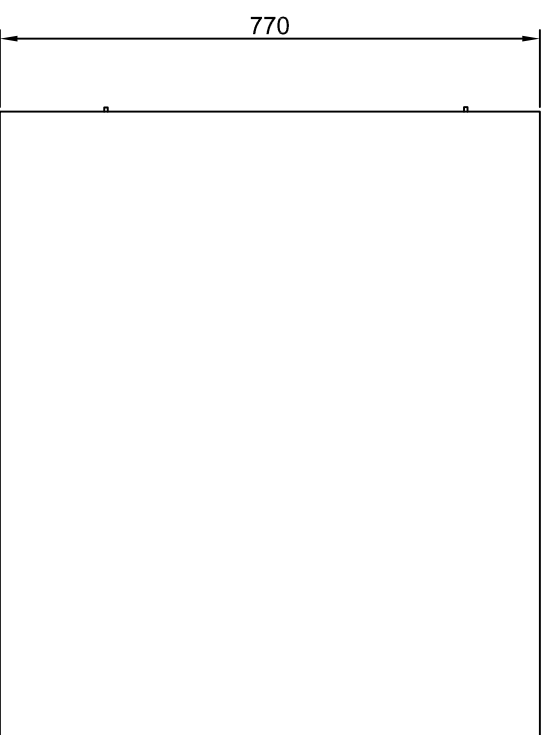
PART No.
 ISO-3PH-315kVA-RAIL

DATE: 04/03/2015

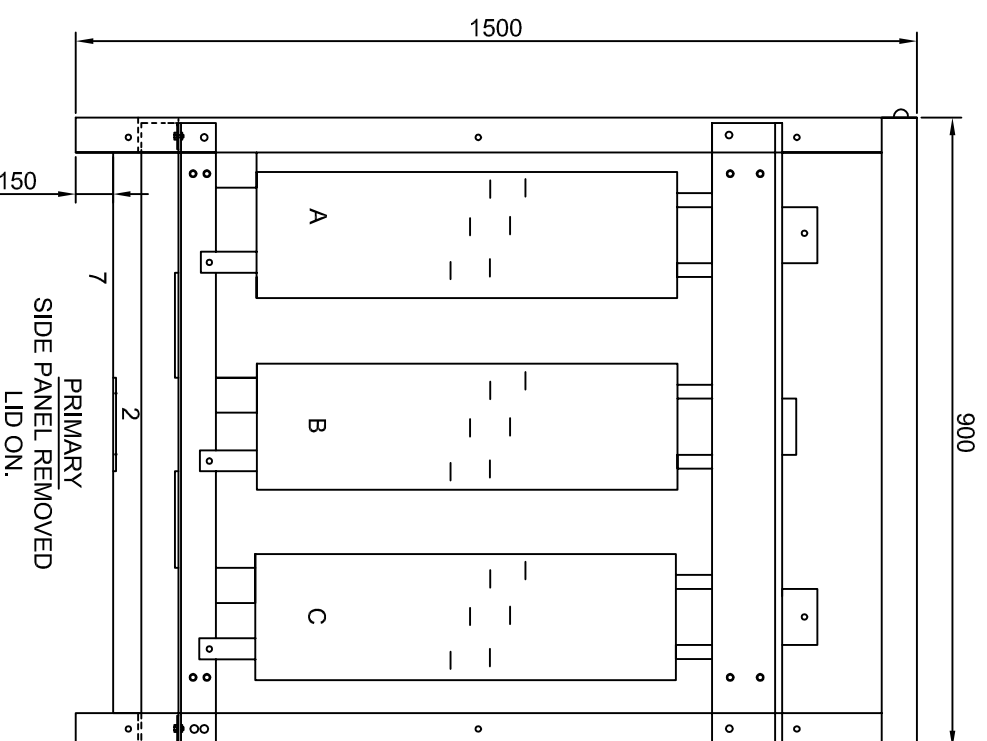
REV:1

DRAWN: SGS

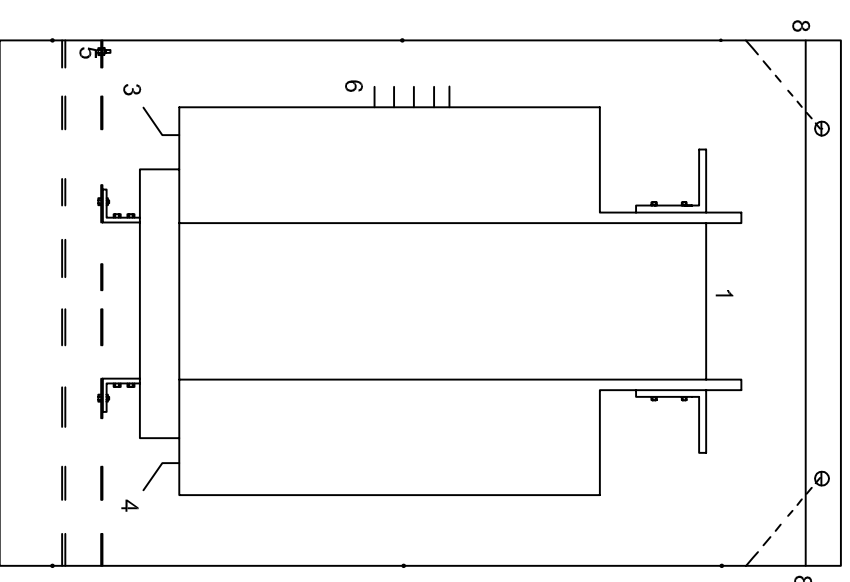
CHECKED: MRL



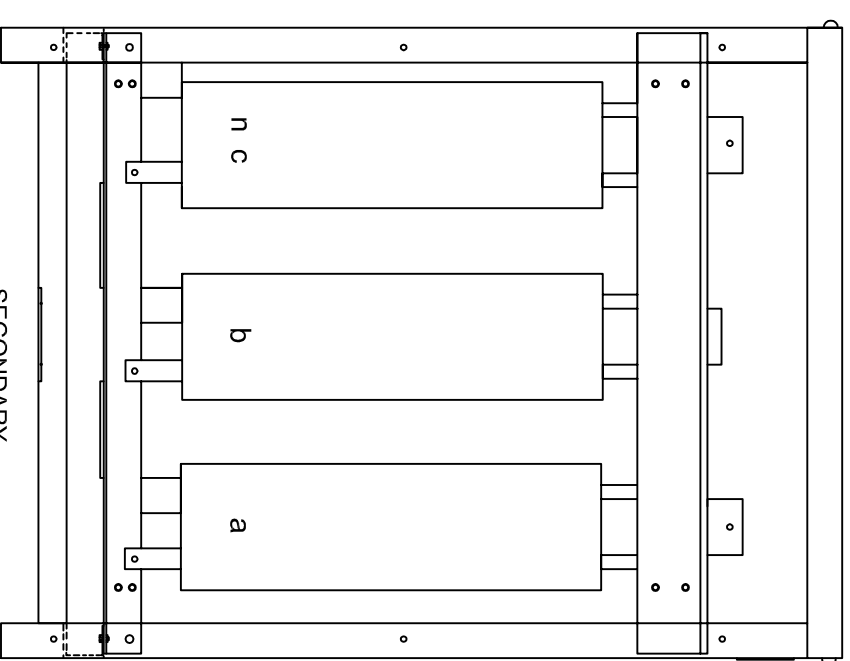
TOP VIEW OF LID



PRIMARY
 SIDE PANEL REMOVED
 LID ON.



END VIEW
 SIDE PANELS AND LID ON



SECONDARY
 SIDE PANEL REMOVED
 LID ON.

- LEGEND:-
1. TRANSFORMER
 2. BOTTOM GLAND PLATE (3mm BRASS)
 - GLAND PLATE COVERS OPENING OF 75 x 490 MM
 3. INPUT TERMINALS (40 x 4MM COPPER) M12 HOLES
 4. OUTPUT TERMINALS (40 x 4MM COPPER) M12 HOLES
 5. EARTH STUD ENCLOSURE (M8 x 40 MM BRASS)
 6. PRIMARY TAPS (25 x 3MM COPPER) M10 HOLES
 7. AIR INLET (BOTTOM)
 8. AIR OUTLET (VENT AT TOP OF SIDE PANELS)
 9. RATING PLATE

- CONSTRUCTION NOTES:-
1. CUBICLE MADE FROM 3.0MM MILD STEEL SHEET
 - PAINT FINISH IS POWDER COAT - OYSTER GREY
 2. BOTTOM GLAND PLATE (3MM BRASS)
 3. NATURAL VENTILATION FOR TRANSFORMER IS THROUGH MESH IN THE BOTTOM AND OUT SIDE VENTS

TRANSFORMER RATING:-
 PART NO: ISO-3PH-315kVA-RAIL
 POWER: 315 kVA
 TYPE: DRY
 COOLING: AN
 IP RATING: IP23
 INSULATION: CLASS H (180°C)
 PHASES: 3
 INPUT CONNECTION: DELTA (D)
 OUTPUT CONNECTION: STAR (Y)
 CONNECTION: Dyn11
 INPUT VOLTAGE: 400V
 FREQUENCY: 50Hz
 INPUT CURRENT: 455A
 OUTPUT VOLTAGE: 400V
 OUTPUT CURRENT: 455A
 MASS: 1385 KG
 NO LOAD LOSSES: 1800W
 COPPER LOSS @115°C: 3800W
 TEMPERATURE RISE: 95°C
 IMPEDANCE: 2.3 TO 2.5%
 EXPECTED IN-RUSH: LESS THAN 8-12 TIMES RATED CURRENT